



The Harvest

Meeting the Need to Feed

Palm Beach Harvest
561-689-4090

2006 Issue 4
July August

Don't Let the "Dog Days" Get You Down!

It's sunny, the glorious blue sky is studded with the white, puffy clouds we know and love. Yes, it's hot. It's very hot. That's our tropical paradise in the dog days of summer! But heat or no, our transporters continue to pick up and deliver thousands of pounds of good, nutritious food to our partner agencies who share it with the **growing number of needy Palm Beach County residents.**

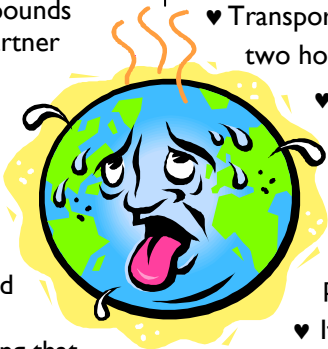
What do they get for donating their time to transporting the ever-growing base of donated food to its destinations? To our loyal transporters, the reward is knowing that because of you, a child, a family, a hungry neighbor will be fed today.

We can never thank our transporters enough. So once again, **thank you so much, you who give so generously of your time, to make Palm Beach County a place where we try to help our fellow human beings in need of a helping hand.**

Palm Beach Harvest partners with local businesses and charitable agencies to provide transportation of donated food that would otherwise be thrown away to agencies who distribute it to homeless and needy people in Palm Beach County.

Yet, the need grows. Please, volunteer to be a transporter of donated food, contributing as little as two hours a week so that needy children and adults can be fed today.

Transporters are the heart of Palm Beach Harvest. We need you to help us transport surplus food.



Of special note: there's an extreme need for transporters in the Boca Raton area. Contact Mike Winokur, 561-496-5221, to volunteer around Boca.

- ♥ Transporters commit to only about two hours of service per week.
- ♥ PBH does its best to pair routes with locations close to transporters' homes.
- ♥ Transporters should be able to lift as much as 40 pound boxes of food.
- ♥ If you have other expertise you can offer such as Excel spreadsheets for data entry of weight logs or marketing/public relations skills, you can help as well!

Please come to one of our **monthly orientation meetings held the second Monday of each month** where you can get your credentials to start lending a helping hand where **it's needed more than ever.** We're looking forward to seeing you at the next orientation meeting at Goodwill Industries.

Orientation Meeting

Second Monday of each month:

- 6:00 p.m. at Goodwill Industries, 1715 Tiffany Drive East, West Palm Beach
- Directions: I-95, exit 45th Street, go east past Congress Avenue to Tiffany Drive East on the right, follow around to parking lot of Goodwill Industries.
- **Call 561-689-4090 for information.**
- Hope to see you there!

Inside this issue:

- ♥ News 2
- ♥ Supporters
- ♥ Zone Coordinators 3
- ♥ New Volunteers
- ♥ New Directions
- ♥ PBH Mission 4
- ♥ Background
- ♥ Goals



Visit us on the
Worldwide Web:

www.palmbeachharvest.org

2006 Board of Directors

Executive Director
Deborah Morgan

President
Lois Levy

Treasurer
Lisa Keller

Secretary/Newsletter
Jeri Wise

Board Members
Gerry Baron
Wayne Barton
Dan West

Legal Counsel
Henry Laffer

Accountant
David. K. Hirsch



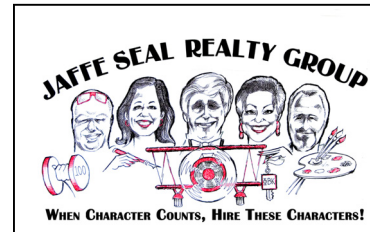
- ◆ **Arkis and Herbert McCray** are going over and above the call of duty in volunteering for Palm Beach Harvest. Not only are they transporting, they're taking on the responsibilities of Zones 1 & 2, conducting the monthly **orientations**, acting as volunteer coordinators, making up badges, and assigning volunteers on routes. They even manned a Palm Beach Harvest table at the recent grand opening of Kobosko's Crossing, a new shopping center in Wellington (Forest Hill Blvd. just east of SR 7/US 441). Our heartfelt thanks to **Herbert and Arkis** for their special efforts!
- ◆ Deborah Morgan spoke at the **Wellington Rotary** on July 11 to introduce them to Palm Beach Harvest. We hope to receive a grant from them to fund the use of a **United Way** truck to move pallettes of food donated by **Sysco Corporation**. Palm Beach Harvest's operations are expanding greatly with these donations, and monetary donations and grants are needed to pay for transporting, storing and distributing large-scale donations of perishable food.

Thanks to our supporters who generously provide goods and services to Palm Beach Harvest

- 👉 Archway Cookies
- 👉 Bush Brothers Inc.
- 👉 City Cellar Restaurant
- 👉 Commerce Bank
- 👉 Dan the Printer
- 👉 Goes Incentives & Awards Inc.
- 👉 Goodwill Industries
- 👉 Ken-Rose Catering Inc
- 👉 KWB Marketing
- 👉 McPrint Instant Printing Center
- 👉 Publix
- 👉 Riverside National Bank
- 👉 Seagull Industries
- 👉 Southeast Catering Inc.
- 👉 Sysco Corporation
- 👉 Wellington the Magazine
- 👉 Wise Workshop Graphic Design
- 👉 Whole Foods Markets



- ◆ **Jaffe-Seal Realty** recently held a home sales event, offering a free lunch from Hillary's and home-viewing caravan into several gated communities in exchange for grocery bags full of nonperishables for **Palm Beach Harvest** as entry. They're sporting a Palm Beach Harvest logo on their truck as well. Thanks to the civic-minded folks at **Jaffe-Seal Realty** for making an effort to integrate public awareness of Palm Beach Harvest into their realty firm. Check out www.JaffeSealRealty.com.



- ◆ A tractor-trailer carrying a full load of foodstuffs was involved in an accident; therefore none of the food could be used for its intended purpose. **Kauff Towing** donated the entire 40-foot semi trailer loaded with condiments, sauces, gravies, canned tuna & chicken, candy bars, canned vegetables and more to Palm Beach Harvest and Westgate Tabernacle. The candy bars were especially well-received!
- ◆ Sadly, the long-time dinner spot at the **Lacuna Golf and Country Club** is closing its doors. The owners have donated its remaining inventory to Palm Beach Harvest in the hope needy people can benefit from it. Thanks, Lacuna, we'll miss you.
- ◆ **The Goo Goo Dolls** will be in concert at Sound Advice Amphitheater on August 31, continuing their tradition of having a canned food drive to benefit Palm Beach Harvest when they appear locally. You can volunteer to help! Call Deborah Morgan at 561-310-6641 for more information.





Thanks to all our **zone coordinators and transporters** for a job well done! Help our Harvest volunteer data processors by mailing your weight logs promptly at the end of each month so they can be processed timely. A great effort of time and detail go into processing these weight logs. Please help us out by being on time.

Zones 1 and 2—zip codes 33403, 33404, 33407, 33408, 33410, 33412, 33418, 33422, 33458, 33469, 33477, 33478

Arkis & Herbert McCray,
561-396-3166, 561-844-7502

Zone 3—zip codes 33401, 33409, 33417, 33413, 33480

Harold Hill, 561-574-6851

Zones 4 and 5—zip codes 33405, 33406, 33415, 33460, 33461, 33462, 33463, 33467, 33411, 33414, 33470, 33413

Cathy Owens, 561-968-5740

Zones 6, 7 and 8—zip codes 33416, 33435, 33436, 33437, 33444, 33445, 33446, 33483, 33484, 33428, 33431, 33432, 33433, 33434, 33486, 33487, 33496, 33498

Mike Winokur 561-496-5221

Welcome New Volunteers

The following people have recently generously offered their time to help alleviate the crucial problem of hunger in Palm Beach County:

Samuel Moore	Dwayne Bankston
Gloria Moore	Vivion Burton
Glauko Cusciano	Rebecah Gaynor
Lydia Catalon	Nhu Nguyen
Rhonda Gallon	Kimberly McCall
George Buchanan	Joseph Harvath
Betty Buchanan	Daniel Langdon
Stephanie Ritland	Jaye Tracy
Jeronia Nixon	

Palm Beach Harvest is straining at the seams to deliver its promise:

Meeting The Need to Feed

Palm Beach Harvest is rescuing record amounts of food and redirecting it from the garbage heap to needy tables. We now have generous companies making large-scale donations of perishable food that must be transported and stored in refrigerated facilities. Palm Beach Harvest, with your help, will rise to the challenge. We're grateful to our volunteer base who continue to donate their time and energy to transporting this food—they are the heart of Palm Beach Harvest and will continue to be. But now we're forced to change our direction from a grass-roots, all volunteer organization to one that gives you the choice to contribute time or **a tax-deductible donation to offset increasing costs of transporting large truckloads of thousands of pounds of good, usable food to ever-growing distribution points for the growing population of people in need here in Palm Beach County.**

Please take a moment to send a donation, in any amount, or if you prefer to donate your critically needed time to transport, attend the orientation meeting described on page one.

Yes! I want to help Palm Beach Harvest with a contribution in the amount of

\$100/month \$50/month \$25/month \$20/month \$15/month

\$10/month Other

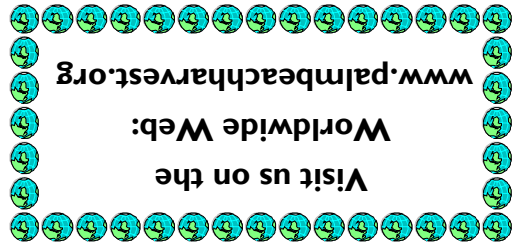
I prefer to make a one-time gift in the amount of \$ _____

Name _____

Address _____

State/Zip _____ Telephone _____

Mail: Palm Beach Harvest, PO Box 540508, West Palm Beach, FL 33467



Palm Beach Harvest



Phone: 561-689-4090

West Palm Beach, Florida 33467

P.O. Box 540508



PRSRKT STD
U.S. POSTAGE
PAID
West Palm Beach, FL
PERMIT No. 4484

Palm Beach Harvest Mission and Background

Mission

Palm Beach Harvest coordinates the transportation of surplus food from food donors to non-profit agencies throughout Palm Beach County.



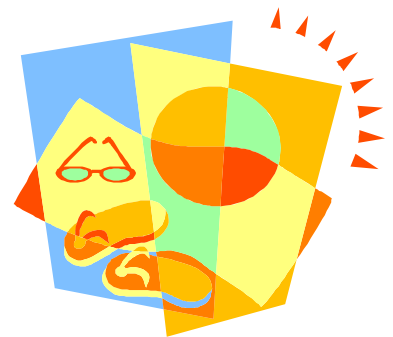
Meeting the Need to Feed

Background

Palm Beach Harvest, a non-profit 501C organization, was founded in May 1998. It is an organization comprised of volunteers who donate their time to transporting donated food to non-profit charitable organizations. We officially began our first food pickups in January 1999. We are a chapter of USA Harvest, a national organization founded in Kentucky in 1988.

Goals

Palm Beach Harvest is striving to bring to the public awareness of the devastating problem of ever-growing congenital hunger and poverty in Palm Beach County. While attempting to partner with and liaison between food-producing and distributing business who must dispose of millions of pounds of good food daily and transport it to agencies who can distribute it to those in need, Palm Beach Harvest also wants to make the public more knowledgeable and accountable for alleviating this problem at the grass roots level.



Have a happy and healthy summer, and please don't forget those in need.